

Hewlett Packard
Enterprise

HPE Alletra

Ending hybrid cloud complexity



HPE Nimble is approaching end of life

The best of both worlds is never an easy negotiation.

In fact, it can often lead to complexity, creating siloes where these “bests” are in regular conflict.

This traditionally has been the case with hybrid cloud. Here, that complexity might have you tinkering and tuning on-premises, edge, and cloud storage solutions to maintain the fragile balance – leaving little time to put them to work and creating a host of irksome considerations besides.

For many organisations, HPE Nimble was the remedy to their biggest hybrid cloud pain points. But as this favoured solution approaches the end of its life, the clock is ticking to implement its replacement – or return to the familiar frustrations of hybrid cloud.



On-premises infrastructures get unwieldy and expensive

When you're spending too much time maintaining and upgrading, there's not much left for using the data you've got.



A busy market means more choice – and complexity

There are no easy decisions when there's a range of dedicated solutions for every challenge – each with their own nuances and compatibilities.



IT needs to reduce the cost of downtime

With updates usually on the manufacturer's schedule, it can feel like every two steps forward require one step back.



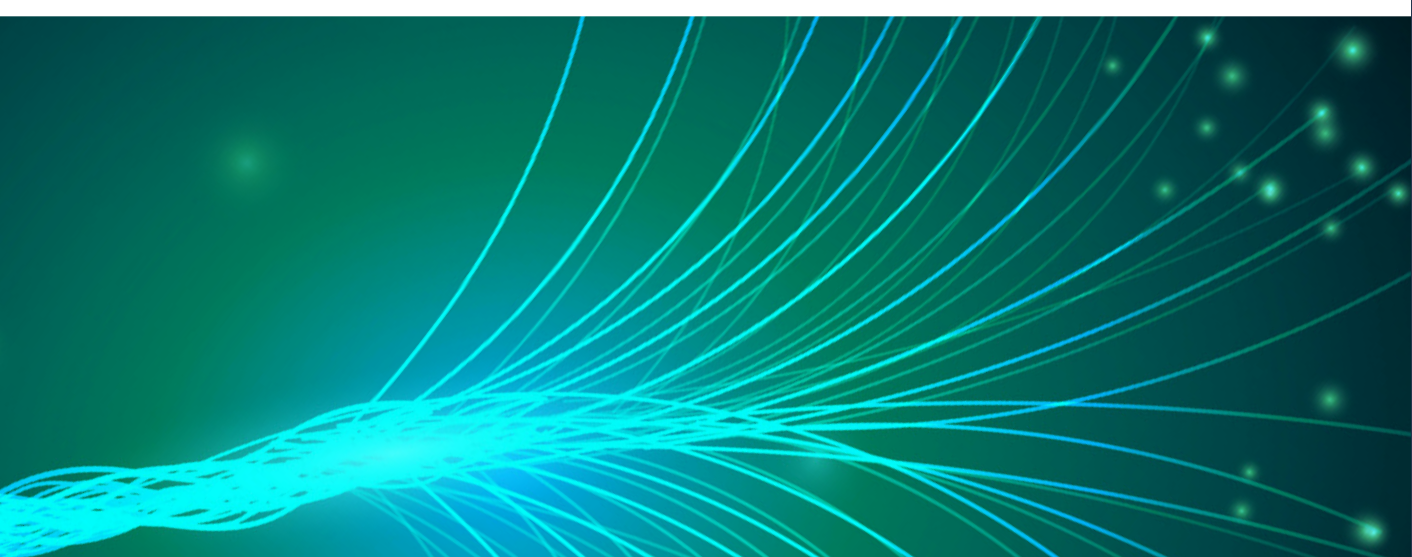
Data is valuable – but it's not being cashed in

When data is simply collected and stored, its potential for driving informed decisions across your business is locked away too.



Businesses need clear paths across their infrastructure

Complex cloud infrastructures are slowing data down as it moves through your business on the way to its destination – if it gets there at all.



HPE Nimble is approaching end of life

An opportunity to upgrade

The natural solution is HPE Alletra, powered by HPE GreenLake.

Together, they bring a cloud operating and consumption experience to wherever data lives – on-premises, in the cloud, at the edge, and across the entire application lifecycle.

Read on to discover more, including three ways HPE Alletra can help you:



**Accelerate
innovation**



**Improve customer
experiences**



**Run any app and
free your data**



**Access on demand
and pay only for
what you use**



**Drive operational
efficiency**



**Future-proof your
infrastructure**



HPE Alletra takes the pressure off your business

More than the replacement for a solution approaching the end of its life, HPE Alletra represents a considerable upgrade to both HPE Nimble and HPE Primera.

It allows you to run any app and free your data. It's backed by the most advanced infrastructure AI on the market. And, through an as-a-service model, you only pay for what you use. So, you can not only ease the pressure on your biggest pain points – but enjoy an elevated cloud-native data infrastructure that builds on the best of the HPE offering.

Here's how.

Cloud-native by design



Accelerate innovation

HPE Alletra is purpose built for cloud operations and consumption from edge to cloud. So, your IT resources are always on and instantly available.

Thanks to HPE GreenLake, you can get a common, cloud operational experience across workload-optimised systems. You'll work with the same agility and simplicity on every app, whether on-premises or in the cloud. And you'll be able to deploy, provision, manage, and scale your storage in a fraction of the time – because the platform sets up in minutes, automates provisioning for you, and upgrades transparently.



Run any app and free your data



HPE Alletra takes the pressure off your business

Driven by AI



Drive operational efficiency

HPE Alletra is powered by HPE InfoSight, the most advanced infrastructure AI. So, you can predict and prevent problems before they occur.

With cloud-based machine learning, you have a predictive model of support and management – from your storage to your virtual machines. It's the same technology that gives you direct access to our experts right when you need it. It even recommends ways you might improve performance, drive higher availability, and put resources to better use.



Future-proof your infrastructure

Consumable as a service



Improve customer experiences

HPE Alletra follows an as-a-service model. So, you're always ready to scale to meet business and customer demands – and only ever paying for what you use.

Because it works with HPE GreenLake, HPE Alletra offers the freedom businesses need to free up cash flow and increase financial agility. That means no over-provisioning, reduced infrastructure costs, and agile responses to any business storage need. It's also available as a managed turnkey solution. Everything works your way, billed to suit your budget.



Access on demand and pay only for what you use

So, you can become more agile than ever

Making the switch from HPE Nimble to HPE Alletra couldn't be simpler. You can look forward to its three core innovations – while enjoying the journey there, too.

Did you know?

HPE Alletra 6000 performs 3x faster than previous HPE Nimble Storage All Flash Arrays.¹



Simple deployment

You no longer need any specialist IT to deploy data infrastructure in minutes. Once HPE Alletra is deployed and powered up, the HPE GreenLake platform does the rest.



Quick provisioning

Take an intent-based, AI-driven approach to provisioning and use application-specific SLAs to automatically select where data is stored and how it's protected.



Automatic upgrades

Forget time-consuming and disruptive upgrades – HPE Alletra does everything automatically to keep you up-to-date at all times.



Speedy, scalable management

Because it's as-a-service, HPE Alletra lets you manage data infrastructure at cloud speeds and scale. That could be up to thousands of systems around the world, managed as one.



Protection and security

Synchronised data replication allows multi-site usage and storage – for consistency across your operations. And robust authorisation, access control, and logging capabilities mean you can maintain compliance confidently.



**Hewlett Packard
Enterprise**

Get started with HPE Alletra with XMA

If you're looking to upgrade from HPE Nimble as it approaches end of life, look no further than HPE Alletra and XMA.

Bringing radical simplicity to your storage experience, HPE Alletra can end unplanned downtime, cut time-consuming upgrades, and keep support costs down. In fact, you'll find the only surprises are pleasant ones:

- HPE Store More guarantee
- 99.9999%+ application availability
- Predictive support function
- Flat support pricing for the life of HPE Alletra
- No more complex, lengthy, disruptive data migrations

And you can make the hybrid workplace even more economical, secure, and sustainable when you choose HPE Alletra through XMA.

With 30 years of experience and a great relationship with HPE, we're the perfect partner for this and all your infrastructure transformations. Draw on our position in the HPE ecosystem for the transformative solutions and expertise you need – and receive end-to-end guidance, from strategy to support.

To find out more about HPE Alletra – and the XMA approach to upgrading – get in touch.

[Contact us](#)